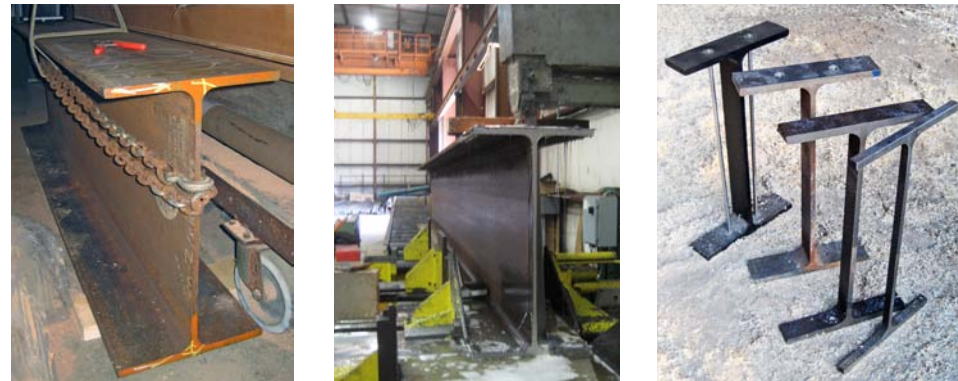
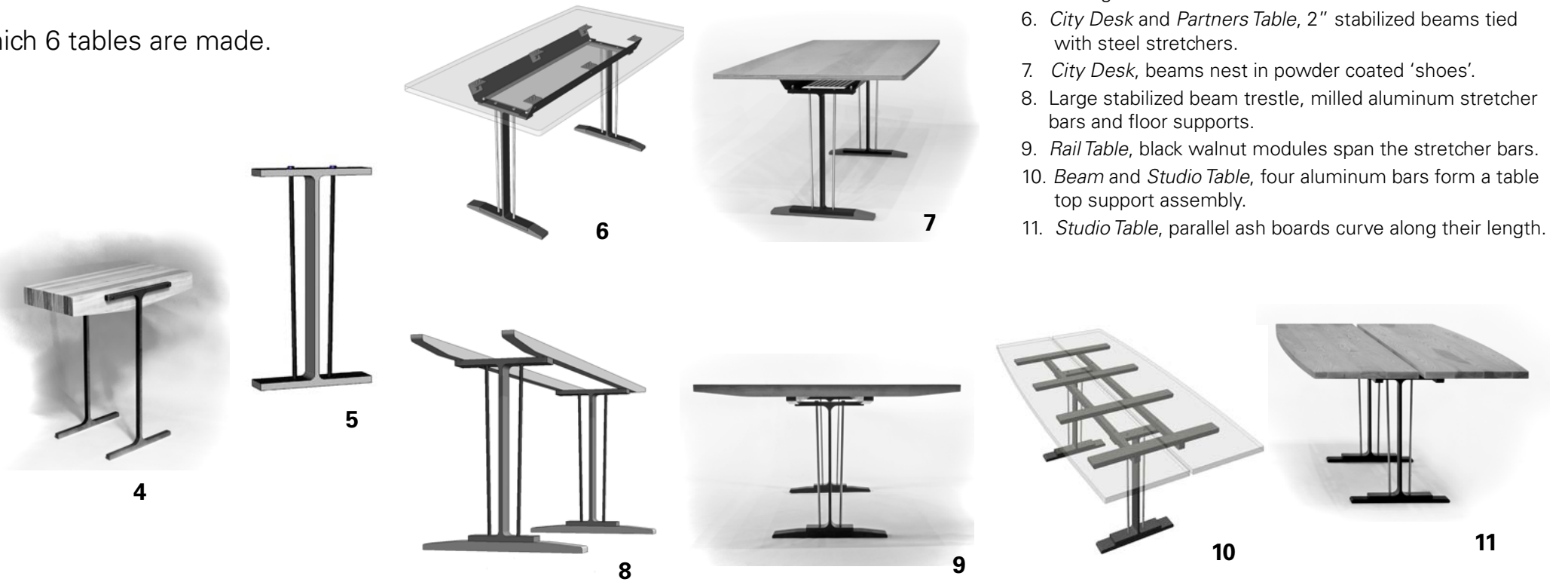


**24" Deep Beam Trestles** Beams are cut in 3 sizes from which 6 tables are made.

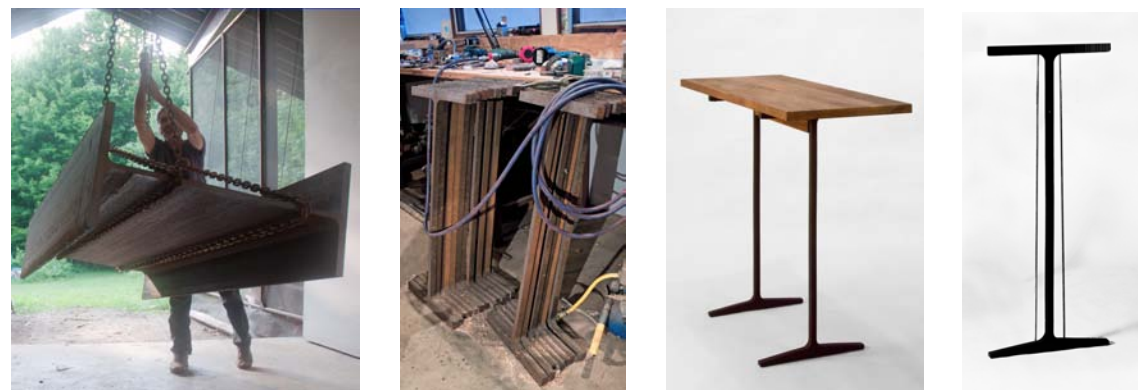


1. Length of W24x104 prior to cutting.
2. Band saw cutting beam into 'slices'.
3. Beam slices: 3/4", 2", 3" and 3" with stainless steel stabilizers.
4. *Light Beam*, legs are 3/4" beam slices.



5. On large tables beam webs are stabilized with tie rods.
6. *City Desk* and *Partners Table*, 2" stabilized beams tied with steel stretchers.
7. *City Desk*, beams nest in powder coated 'shoes'.
8. Large stabilized beam trestle, milled aluminum stretcher bars and floor supports.
9. *Rail Table*, black walnut modules span the stretcher bars.
10. *Beam* and *Studio Table*, four aluminum bars form a table top support assembly.
11. *Studio Table*, parallel ash boards curve along their length.

**Bridge Beam Trestles** High tables are made from 36"- 42" beams.



12. Length of big beam prior to saw cutting.
13. Bridge beam slices prior to machining. The lower flange is saw cut to a taper.
14. *Podium Table*, the tabletops are available in black walnut, ash or poplar.
15. 42" deep beam slice stabilized with stainless steel tie rods.
16. *Standing Desk*, 42" beams braced with stainless steel tie rods.



16

**Foundation Beam Trestles** Low tables from piling beams.



17. HP14x102 piling beam scrap prior to sandblasting.
18. Band saw slice of 14" beam.
19. *Foundation Beam Coffee Table*, wood stretcher ties beams under hardwood tabletop.